

COMMUNICATIONS & COMPUTING

# Connectivity. Reliability. Efficiency.

TTM Technologies is Driving to Innovate Computing and  
Networking Solutions to Advance AI Technologies



ABOUT TTM

TTM Technologies, Inc. is a leading global manufacturer of technology products, including mission systems, radio frequency ("RF") components, RF microwave/microelectronic assemblies, and technologically advanced interconnect products, including PCBs and substrates. TTM stands for time-to-market, representing how TTM's time-critical, one-stop design, engineering and manufacturing services enable customers to reduce the time required to develop new products and bring them to market. Additional information can be found at [www.ttm.com](http://www.ttm.com)

0607-000007-2026

FOLLOW US      

#TTM #TTMTECH #INSPIRINGINNOVATION

OUR WEBSITE [WWW.TTM.COM](http://WWW.TTM.COM)



Inspiring Innovation



Inspiring Innovation

## COMMUNICATIONS & COMPUTING

# Advanced Computing and Networking Applications Rely on TTM Technologies

### WHY CHOOSE TTM?

TTM Technologies ("TTM") is committed to the continuous development of advanced computing applications. TTM is a leading provider of complex printed circuit boards ("PCB"s) and backplanes for high-end computing, cloud computing, artificial intelligence ("AI"), hyper-scale servers, data storage, and microprocessor applications.



2



### Global Footprint

- Full service offering
- Product development, quick-turn, volume production, and assembly
- Seamless transfer from prototype to volume production
- Global sales and field applications support
- Worldwide manufacturing locations to strengthen supply chain resiliency

1800+  
Engineers and  
Technology  
Professionals

20+  
Factories in  
operation  
worldwide

360+  
Sales support  
located in major  
markets globally



### Reputation

- Trusted supplier to the Computing industry for over 25 years
- Award-winning manufacturing facilities and teams
- Strong relationships with OEMs and EMS through dedicated account teams
- High-reliability expertise for our customers in both commercial and non-commercial industries



### Technology

- Ongoing capital investment for capacity and advanced capabilities to support customers' growing needs
- Signal Integrity Testing Expertise
- Advanced technology and high reliability PCB solutions
- TTM is a major supplier of HDI technology, providing expertise in HDI, advanced HDI, and RF processing
- Early technology collaboration; improved design for manufacturing and cost
- State-of-the-art R&D lab to support extensive materials testing, metrology, and failure analysis capabilities

3

## Global Management Strategy

Through globally-focused early supplier involvement, TTM optimizes material selections and seamlessly coordinate engineering and operations. We identify and utilize “best practice” processes and preferred materials to ensure high quality products are delivered. We establish an engineering and process strategy for the entire product lifecycle to maximize efficiency and minimize waste. Our customer support teams facilitate site and pricing strategy, linking customer, sales, and operations to ensure all parties are working together towards the same goals with confidence.

## Reduced Risk

Greater ease and reliability when transferring part numbers from prototype site to volume site. Not to mention having a professionally managed global supply chain and network of manufacturing facilities provides peace of mind, especially knowing that there are backup facilities available when needed.

## Manufacturability For Volume: Considered From The Start

TTM has developed strategies that provide our customers with efficient, streamlined approaches to help their products seamlessly transfer from prototype to volume production across our sites in North America and Asia Pacific. The streamlined quoting, in parallel stack-ups, Design For Manufacture (“DFM”) reviews during the tooling stage, and the efficient technical query (“TQ”) process allow our global teams to reduce risk and provide faster time-to-market and superior quality products to customers worldwide.

## Save Time & Resources

A single TQ sent to our customer, outlining all issues, valid for prototyping and production. Faster development cycles mean shorter time-to-market.

## Common Material Strategy

No need to redesign to account for different dielectric parameters; saving time and resources.



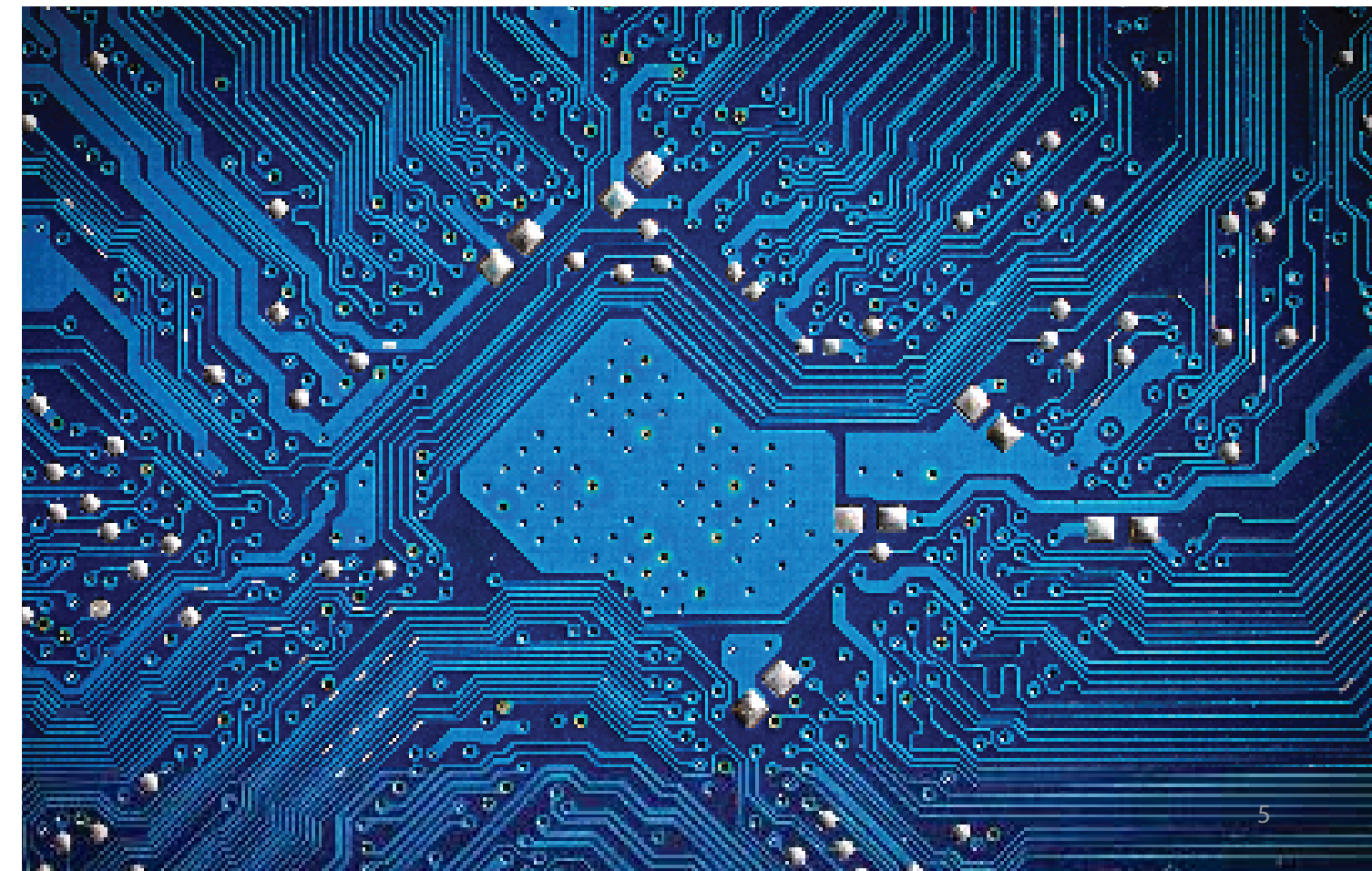
TTM recognizes our opportunity to positively impact the world around us by managing our operations in a sustainable manner. We believe that sustainable practices are essential to the long-term success of our business and that we have a responsibility to consider how our business interacts with society and impacts the environment. To learn more about our sustainability efforts, view our CSR report at [ttm.com](http://ttm.com).

## Leveraging global reach and expertise to deliver products to market on time

How can a prominent Fortune 100 computing company with design and program management centers worldwide ensure that a crucial product launch is delivered on time and with top quality? This was the challenge faced by one of our customers with offices around the world at risk of missing a deadline set by the US government. Failure to meet the deadline would have resulted in significant penalties. TTM Technologies played a pivotal role in assisting the customer through our global reach and expertise. The customer overcame these challenges and delivered their critical computing system on time.

## Challenge - Coordinating support across global teams

TTM's customer had design and program management centers in different parts of the world. This posed a significant challenge for coordination and communication. TTM provided specialized technical and sales support to ensure that the product was brought to market on time. Meeting the deadline was critical for the customer in order to avoid significant penalties. TTM's global expertise and dedication to excellence ensured that the project was delivered on time and quality was assured, helping the customer overcome the challenges associated with a global supply chain.



## Advantages – Global reach and centralized communication

TTM's global account management team and global reach allowed TTM to coordinate design activities, product launch, and a demanding schedule. This approach had several benefits for the customers, including a centralized point for efficient and timely communication with a focus on on-time delivery, high quality product performance, and enhanced flexibility to meet last-minute schedule changes. TTM's customer support system proved to be a valuable asset to the customer, enabling them to improve the efficiency and time and underscore its reputation as a preeminent leader in the industry.



For more information on our solutions for Communications and Computing, please speak with your TTM Sales representative or contact us by:



[CorporateMarketing@ttm.com](mailto:CorporateMarketing@ttm.com)



[ttm.com/contact](https://ttm.com/contact)

## TTM GLOBAL LOCATIONS



### CORPORATE LOCATIONS /REGIONAL OFFICE

LOCATION	PHONE
<b>NORTH AMERICA</b>	
Global Headquarters ("HQ")	+1.714.327.3000
TTM St. Louis ("STL")	+1.314.727.2087
<b>ASIA PACIFIC</b>	
Commercial Sector Headquarters ("CS HQ")	+852.2272.2222
TTM Japan ("JP")	+81.050.5306.2122
	050.5306.2123 (Japan Domestic Only)
TTM Taiwan ("TW")	+886.3.280.7577
<b>EMEA</b>	
TTM Germany ("DE")	+49.171.285.4994
TTM India ("IN")	+91.9980.047.215
TTM United Kingdom ("UK")	+44.2392.232392

### COMMERCIAL FACILITIES

LOCATION	PHONE
<b>NORTH AMERICA</b>	
TTM Logan ("LG")	+1.435.753.4700
TTM San Jose ("SJ")	+1.408.280.0422
TTM Toronto ("TOR")	+1.416.208.2100
<b>ASIA PACIFIC</b>	
TTM Dongguan ("DMC")	+86.769.8622.8000
TTM Guangzhou ("GZ")	+86.20.6287.8777
TTM Huiyang ("HY")	+86.752.261.7136
TTM Penang ("PNG")	+60.4565.7788
TTM Zhongshan ("ZS")	+86.760.2226.9805