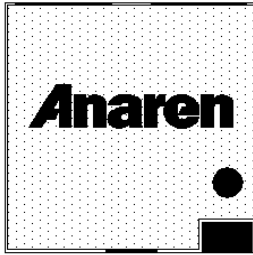


Surface Mount Attenuator 150 Watts



Description

The D150NA30C4 is high performance Aluminum Nitride (AlN) surface mount attenuator. It is intended as a cost competitive alternative to standard attenuators and is well suited to all cellular frequency bands such as; GSM, DCS, PCS, PHS and UMTS. The high power handling makes the part ideal for circulator or coupler termination. The attenuation port is designed for power sampling.

Features:

- 150 Watts
- DC – 4.6 GHz
- AlN Ceramic
- RoHS Compliant
- Non-Nichrome Resistive Element
- Low VSWR
- 100% Tested
- Small Size

General Specifications

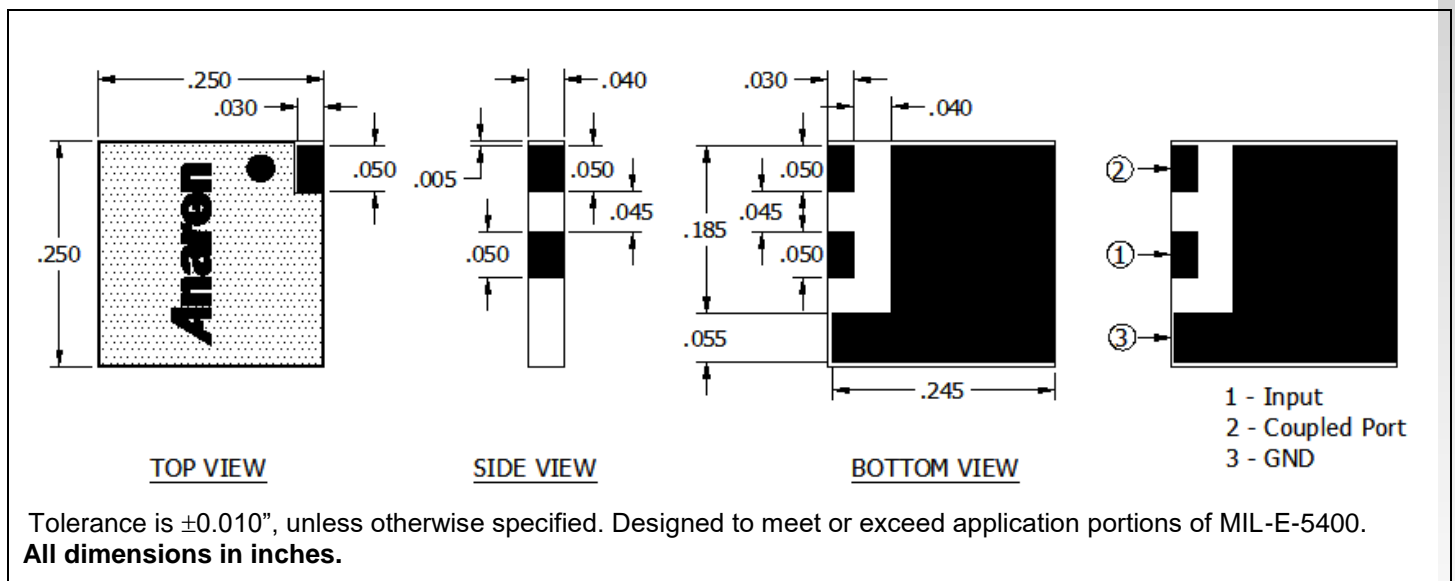
Resistive Element	Thick film
Substrate	AlN Ceramic
Terminal Finish	Matte Tin over Nickel Barrier
Operating Temperature	-50 to +200°C (see de rating chart)

Electrical Specifications

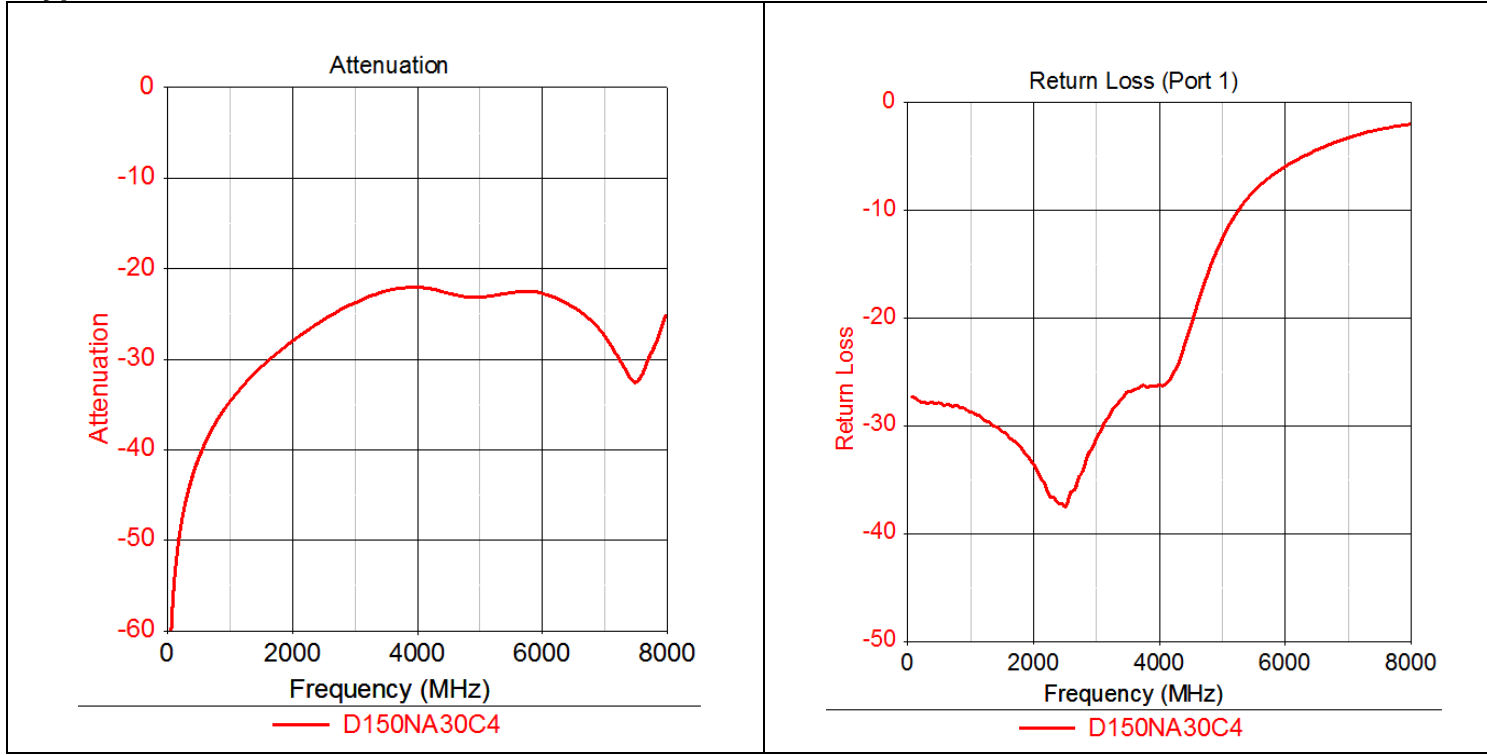
Power:	150 Watts
Frequency Range:	DC – 4.6GHz
Return Loss	20 dB (4.0 GHz)
Attenuation	16 dB (4.6 GHz)
	See table

Specification based on unit properly installed using suggested mounting instructions and a 50 ohm nominal impedance. **Specifications subject to change.**

Outline Drawing



Typical Performance:

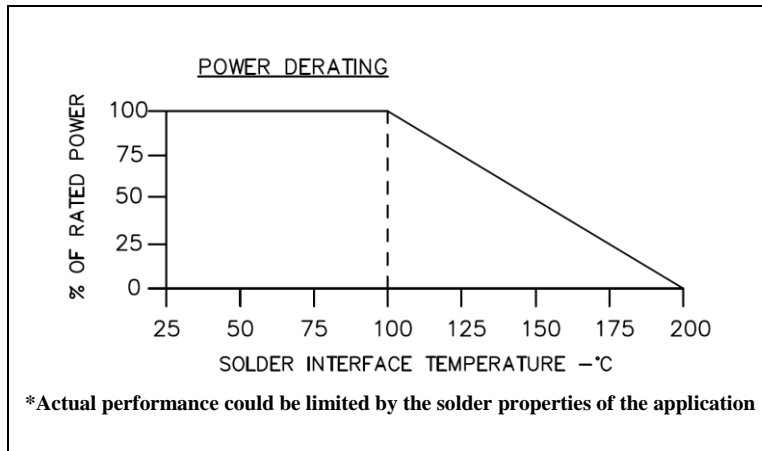


Attenuation (Db):

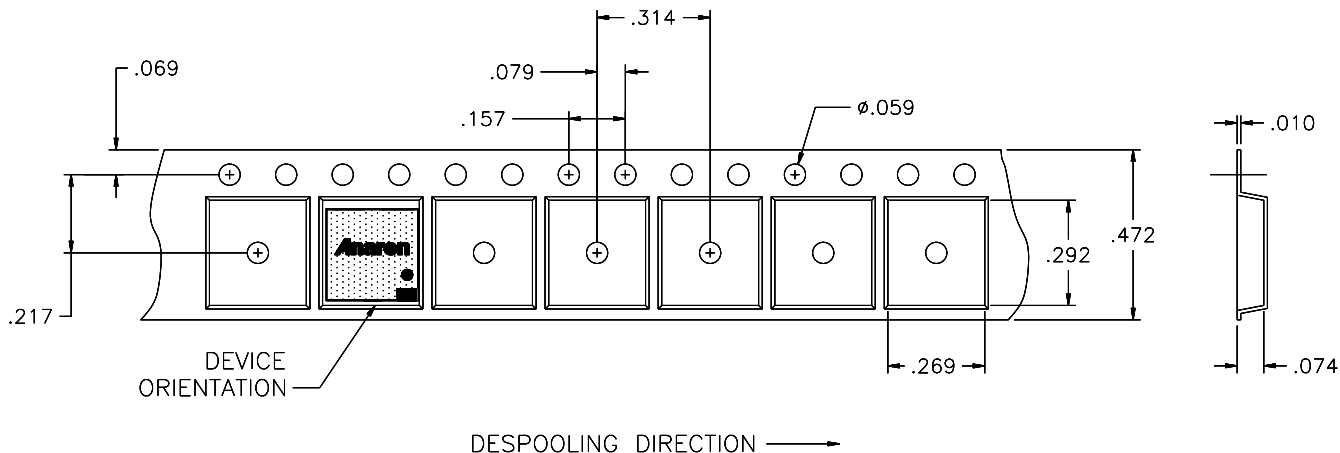
Frequency (MHz)	D150NA30C4	
	Nominal Attenuation (dB)	Attenuation Tolerance (dB)
700	-38.0	+/-1.5
1000	-34.8	
1800	-29.2	
2200	-27.1	
2500	-25.7	
3700	-22.3	
4600	-22.3	



Power De-rating:



Tape & Reel:



Model D150NA30C4

Rev. E

Anaren

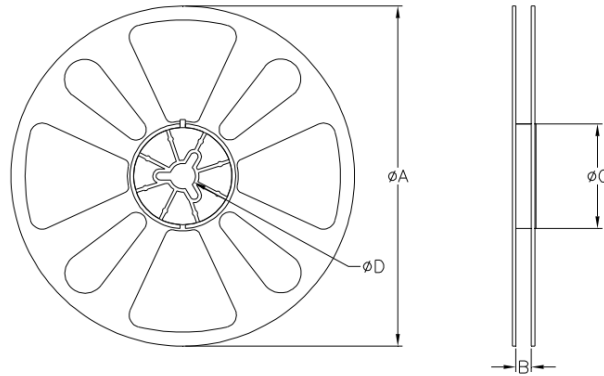


TABLE 1		
QUANTITY/REEL	REEL DIMENSIONS mm	
1000	ϕA	177.80
	B	12.00
	ϕC	50.80
	ϕD	13.00

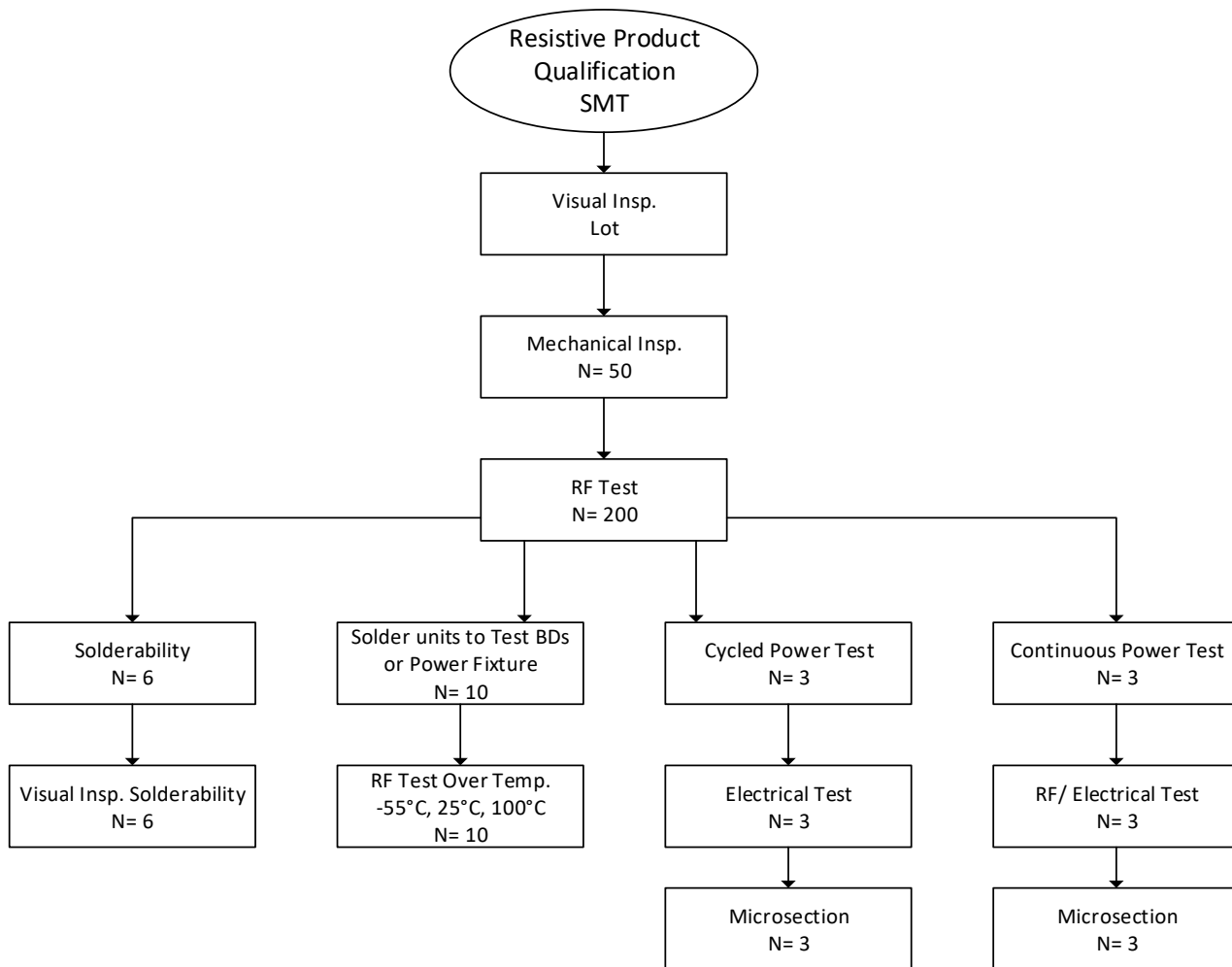
USA/Canada: (315) 432-8909
Toll Free: (800) 544-2414
Europe: +44 2392-232392

Available on Tape and
Reel For Pick and Place
Manufacturing.



Anaren
What'll we think of next?™

Qualification:



3 of 3

